



GMT MONTHLY MEMBERSHIP PROGRESS REPORT

Results as of: 4/30/2019

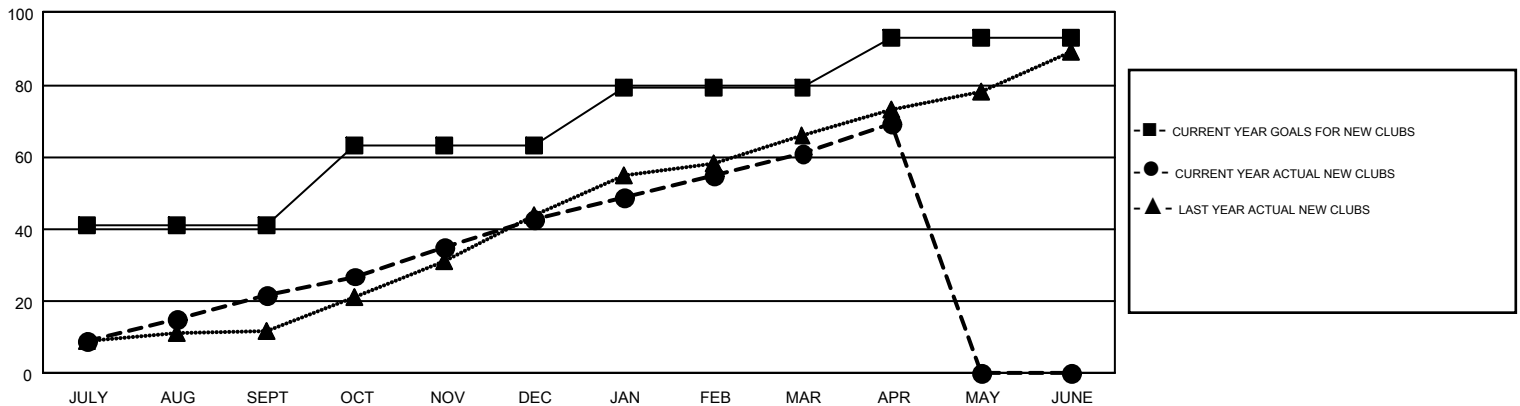
GMT Constitutional Area 6, Group E

GMT: VASUDEV VALAWALKAR

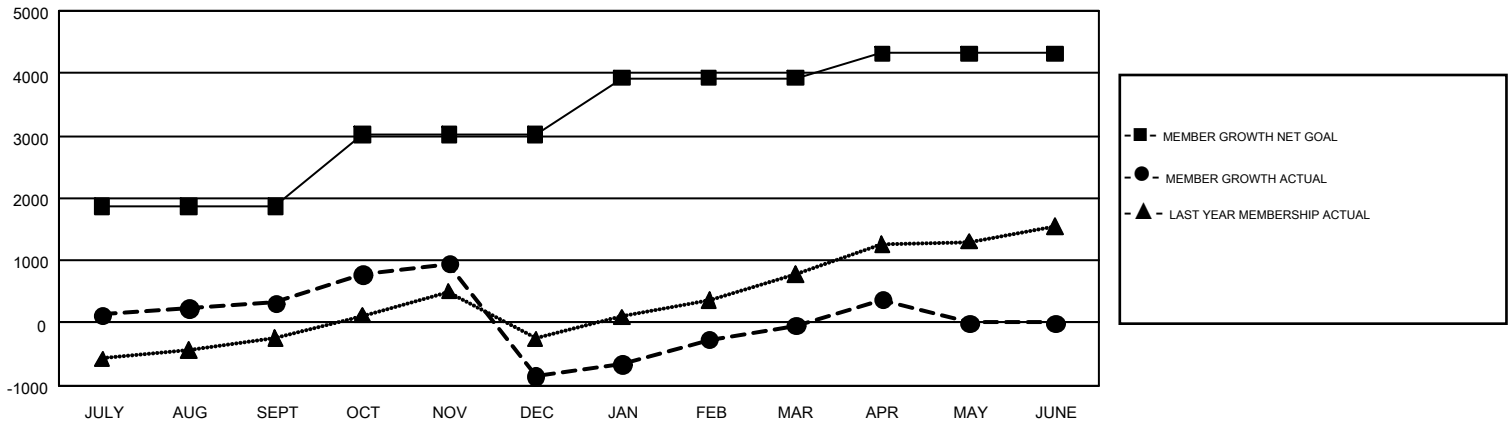
REPORT DOES NOT INCLUDE CLUBS IN UNDISTRICTED AREAS.

Clubs				Members			
RESULTS FOR 2018-2019				RESULTS FOR 2018-2019			
QUARTER	NEW CLUB GOAL	NEW CLUBS	DROPPED CLUBS	QUARTER	MEMBER GROWTH NET GOAL	MEMBER GROWTH ACTUAL	DROPPED MEMBERS ACTUAL (including transfers)
JULY/AUG/SEPT	41	22	9	JULY/AUG/SEPT	1,861	1,424	966
OCT/NOV/DEC	22	21	54	OCT/NOV/DEC	1,153	1,425	2,488
JAN/FEB/MAR	16	18	8	JAN/FEB/MAR	914	1,612	453
APR/MAY/JUNE	14	8	0	APR/MAY/JUNE	387	531	70

GOALS AND ACTUAL NEW CLUBS CUMULATIVE



GOALS AND ACTUAL MEMBERS CUMULATIVE



DROPPED CLUBS: 71	663 CLUBS OF 1,135 ADDED 1 OR MORE NEW MEMBERS	GENDER DISTRIBUTION MALE 26,000 (75.95%) FEMALE 8,231 (24.05%)
DROPPED MEMBERS DECEASED 96 CLUB CANCELLED 1,329 OTHER 2,552 <hr/> TOTAL 3,977	CLICK HERE FOR CUMULATIVE MEMBERSHIP DATA	TOTAL FAMILY UNIT MEMBERS 10,687 FAMILY MEMBERS PAYING HALF DUES 5,714